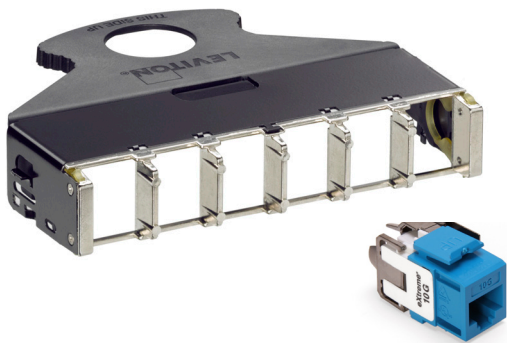


e2XHD 6-port Copper Cassette Kit

APPLICATION

The e2XHD Patching System, an easy-to-connect, high-density solution, provides simple termination and improved cable routing for both fiber and copper applications. Cassettes quickly snap-in and pull out of the high density angled panel, making installation easier than ever. Panel covers and blank cassette inserts offer extra protection from dust and damage. Copper cassettes are available either on pre-terminated trunks or with field-terminated connectors.



SPECIFICATION

Copper cassettes shall snap into rear of panel and shall require no tools to remove. Copper cassettes shall accept six ports and come kitted with six eXtreme® CAT 6A or CAT 6 QuickPort® connectors. Cassettes shall meet all TIA 568-C.0 requirements, and connectors shall meet all TIA 568-C.2 requirements and applicable standards.

FEATURES

- Copper cassettes are kitted with eXtreme CAT 6A (6110G) or CAT 6 (61110) QuickPort connectors
- Connectors easily snap into cassette after termination
- Alignment tabs on rear of panel ensure upright insertion of cassettes
- To remove cassettes from panel, simply pull out handle using release latch

DESIGN CONSIDERATIONS

- Panel holds up to 8 cassettes (48 copper ports)
- Six copper ports per cassette

PHYSICAL SPECIFICATIONS

Materials: Cold-rolled steel and high performance plastics
Capacity: Six QuickPort® Connector ports
Connector Body: High-impact, fire-retardant plastic rated UL 94V-0

STANDARDS COMPLIANCE

- CAT 6A connectors meet TIA 568-C.2 channel requirements, compliant with FCC Part 68; UL Listed; IEEE 802.an for 10GBASE-T over UTP cable
- CAT 6 connectors meet TIA 568-C.2 channels requirements, cULus Listed, NOM, and ACA

WARRANTY INFORMATION

For a copy of Leviton product warranties, visit www.leviton.com.

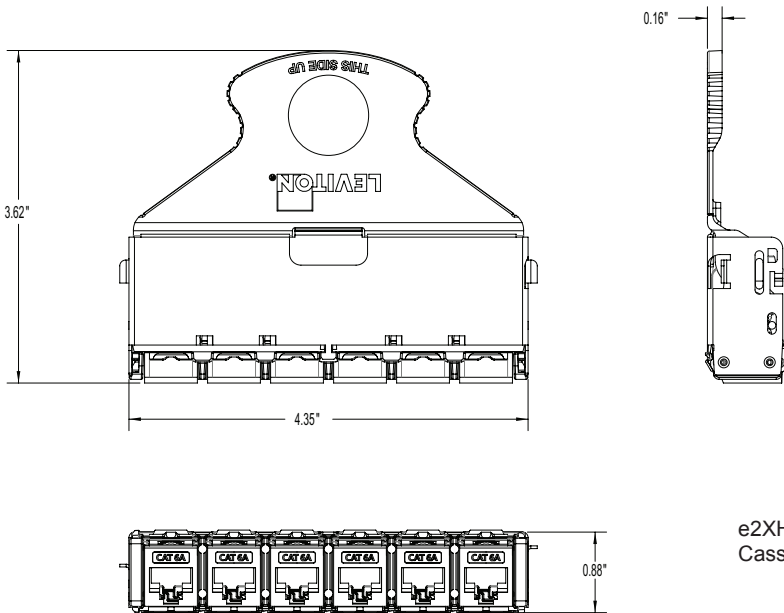
COUNTRY OF ORIGIN

United States of America

ELECTRONIC FILES

For CAD files, typical specs, or technical drawings (.DXF, .DWG), visit www.leviton.com.





e2XHD Copper Cassette Kit

e2XHD PATCHING SYSTEM

Description	Part No.
e2XHD 6-port CAT 6A Cassette Kit*	E2X6A-xxx
e2XHD 6-port CAT 6 Cassette Kit*	E2X61-xxx

* = CAT 6A Cassettes include six 6110G QuickPort® Connectors. CAT 6 Cassettes include six 61110 QuickPort Connectors
xxx = colors: Black (BLK), Blue (BLU), Green (GRN), Yellow (YEL), Red (RED)



All cassettes are shipped in durable plastic clamshell packaging.



Leviton Network Solutions
2222 - 222nd St. SE
Bothell, WA 98021-4416

Asia / Pacific
T +1.631.812.6228
E infoasean@leviton.com

Canada
T +1.514.954.1840
E pcservice@leviton.com

Caribbean
T +1.954.593.1896
E infocaribbean@leviton.com

China
T +852.2774.9876
E infochina@leviton.com

Colombia
T +57.1.743.6045
E infocolombia@leviton.com

tel 1-800-824-3005
1-425-486-2222
appeng@leviton.com
www.leviton.com

Europe
T +33.6.8869.1380
E infoeurope@leviton.com

India / SAARC
T +91.80.4322.5678
E infoindia@leviton.com

Mexico
T +52.55.5082.1040
E isamarketing@leviton.com

Middle East & Africa
T +971.4.886.4722
E lmeinfo@leviton.com

South Korea
T +82.2.3273.9963
E infokorea@leviton.com